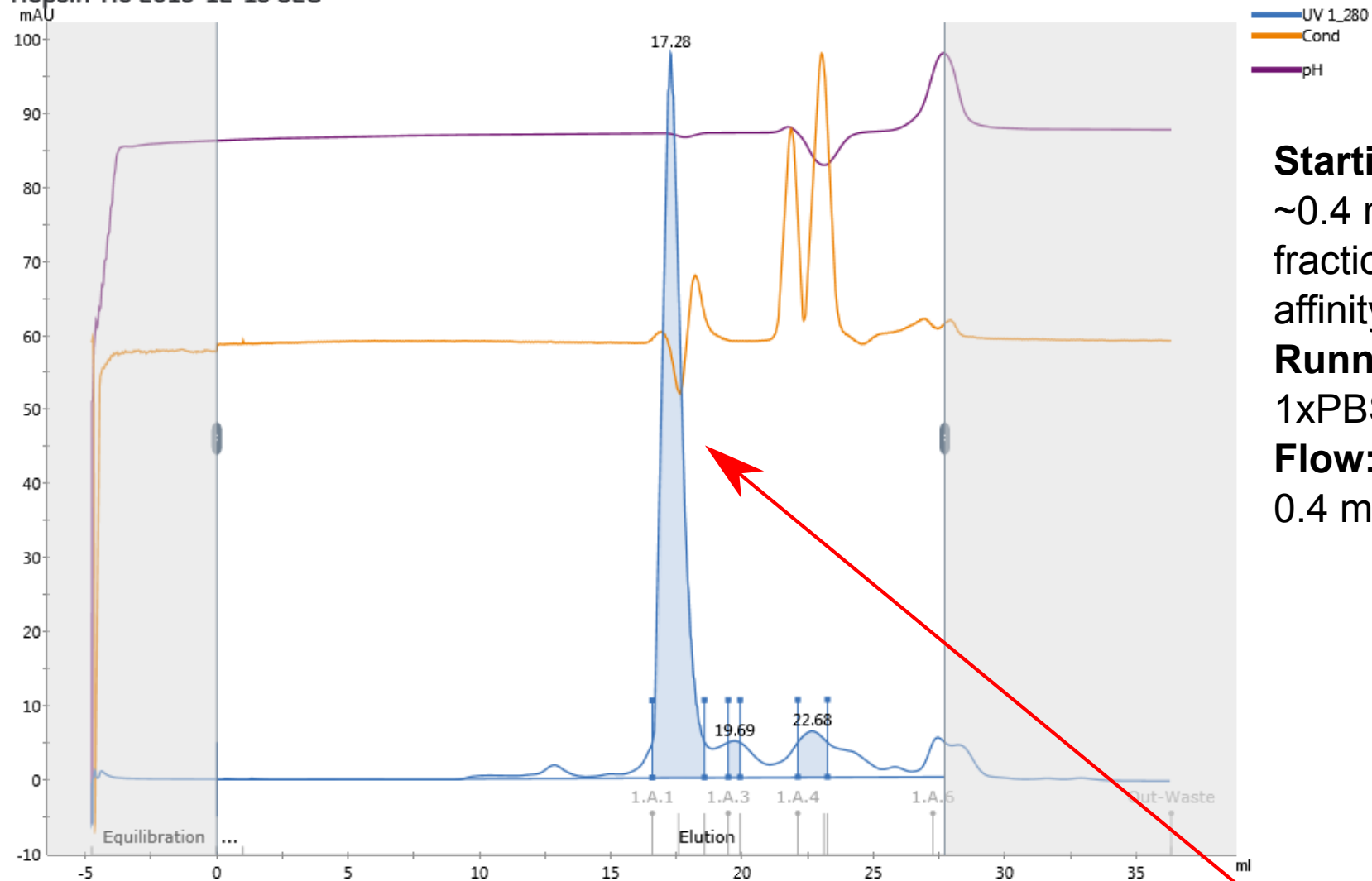


Group 1 & 8, Step 2: Size Exclusion Chromatography of hHepsin-H₆

Hepsin-H6 2015-12-15 SEC



Starting material:
~0.4 ml of conc. elution
fraction from step 1 (Ni²⁺
affinity chromatography)
Running buffer:
1xPBS
Flow:
0.4 ml/min

Very tiny elution peak